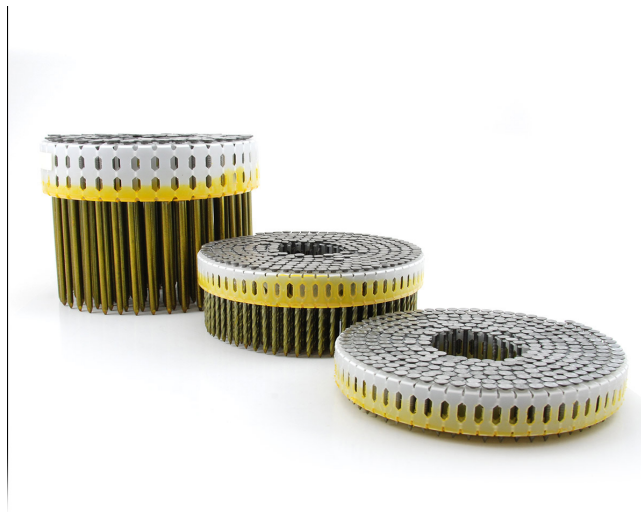
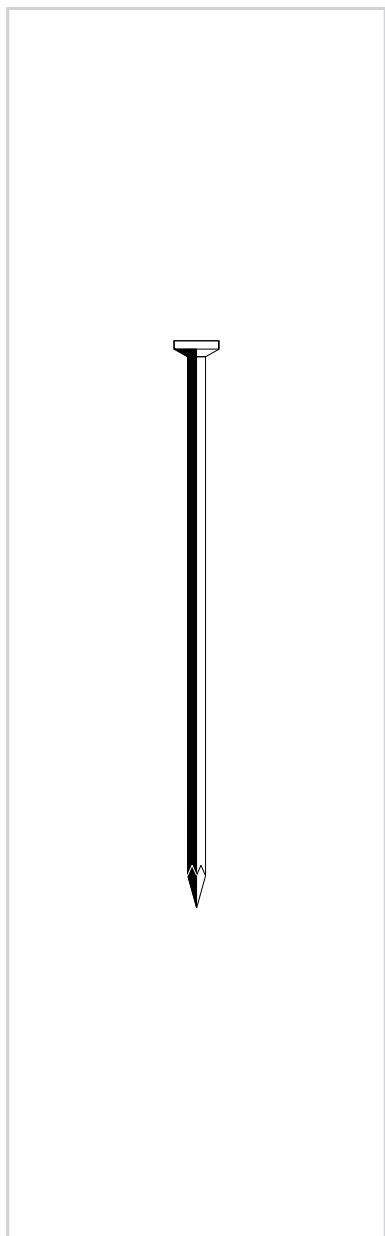


# Clavo bobina plástico Ø2,7 *Plastic coil nails Ø2,7*



Clavo en bobina plástico *Plastic coil nails*



## Acabado *Finish*

 Pulido  
*Polished*

## Clavo por bobina *Coil capacity*

325

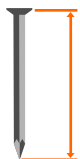
## Angulo unión *Collation angle*



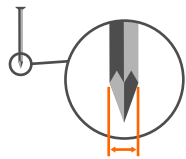
Escanea el código QR para más info

*Scan the QR code for more info*

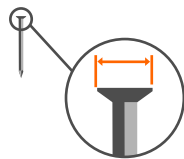
## Largo clavo *Nail length*

	min	50 mm	2" inch
	máx	75 mm	3" inch

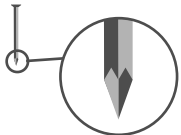
## Diámetro clavo *Nail diameter*

	2,7 mm	.106" inch
--	-----------	---------------

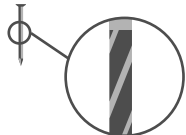
## Cabeza clavo *Nail head*

	6,0 mm	.236" inch
--	-----------	---------------


## Punta *Point*

	<b>Diamante</b> <i>Diamond</i>
---	-----------------------------------

## Tipo caña *Shank type*

	<b>Roscado</b> <i>Screw</i>
---	--------------------------------

## Tipo clavo *Nail type*

	<b>Bobina plástico</b> <i>Plastic sheet coil</i>
---	---